

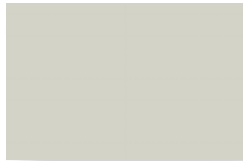


**STANDARD COLORS**

Due to limitations in the printing process, please request actual color chips for accurate color viewing.



BUCKSKIN



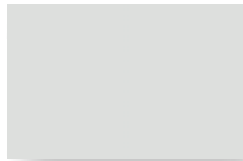
PARCHMENT



ALMOND



AGED BRONZE



SHASTA WHITE



FOREST GREEN



PATINA GREEN



SIERRA TAN



MEDIUM BRONZE



CHARCOAL GREY



HEMLOCK GREEN



BRISTOL BLUE



TERRA-COTTA



DARK BRONZE



ZINC GREY



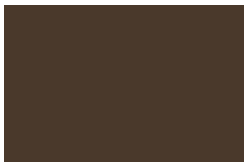
HARTFORD GREEN



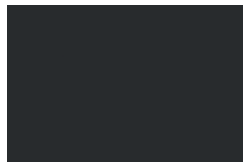
ROYAL BLUE



COLONIAL RED



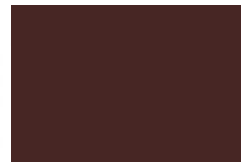
COPPER BROWN



MATTE BLACK



TEAL GREEN



BURGUNDY



DEEP RED

**PREMIUM COLORS**

Berridge premium colors require a nominal surcharge.



NATURAL WHITE



AWARD BLUE



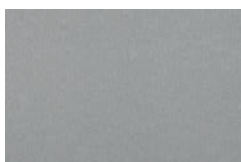
CHAMPAGNE



COPPER-COTE™



ANTIQUÉ  
COPPER-COTE



LEAD-COTE™



PREWEATHERED  
GALVALUME®

**NATURAL METAL FINISH**

Berridge Acrylic-Coated Galvalume® is a coated sheet product that combines the corrosion resistance of GALVALUME® steel sheet with a clear, organic resin applied to the top side and bottom side of GALVALUME® substrate.



ACRYLIC-COATED  
GALVALUME®



ZINC-COTE™



All colors except Award Blue comply with LEED® v3 & Energy Star requirements for roof slopes greater than 2:12.  
 Almond complies with LEED® v3 requirements for low slopes less than or equal to 2:12.  
 Natural White complies with LEED® v3 & Energy Star requirements for low slopes less than or equal to 2:12.

**KYNAR 500® HYLAR 5000™ SPECIFICATIONS FOR  
GALVANIZED AND GALVALUME® COIL COATING APPLICATIONS:**

TESTED PROPERTY	TESTING METHOD	KYNAR 500® or HYLAR 5000™
Colors Available	---	See color chart on reverse side
Specular Gloss	ASTM D-523-80	Low and medium gloss only
Color Uniformity	ASTM D-2244-79	Color controlled both instrumentally and visually
Dry Film Thickness	ASTM D-1400-81, ASTM D-1005-84, NCCA 11-13, 11-14, 11-15	Primer 0.25 ± 0.05 mil, Topcoat 0.8 ± 0.05 mil
Hardness	ASTM D-3363-89, NCCA 11-12, Eagle Turquoise Pencils	HB Minimum
Adhesion (X-Cut)	ASTM D-3359-90	No adhesion loss
Adhesion (Crosshatch)	ASTM D-3359-90	No adhesion loss
Direct Impact Flexibility	ASTM D-2794-84, Gardner Impact Tester, 1/10" Distortion	Excellent, no removal
Reverse Impact Flexibility	NCCA Spec. 11, ASTM D-2794-84, Gardner Impact Tester, 5/8" ball Impact force in inch pounds equal to metal thickness	Excellent, no cracking or loss of adhesion
Formability	ASTM D-4145, 180° T-Bend on 1/8 Mandrel	No cracks or loss of adhesion
Salt Spray Resistance	ASTM B-117-73 (1992)	Passes 1000 hrs on H.D.G. Steel 1000 hrs on Galvalume®
Humidity Resistance	ASTM D-2247 (1987)	Passes 2000 hrs on H.D.G. Steel 2000 hrs on Galvalume®
Acid Resistance	ASTM D-1308-79 (1987), Proc. 3.1.1 10% Sulfuric Acid spot test, 24 hr exposure	Excellent, no effect
Alkali Resistance	ASTM D-1308-79 (1981), Proc. 5.2 10% Sodium Hydroxide	Excellent, no effect
Abrasion Coefficient	ASTM D-968-81	100 liters/mil topcoat
Detergent Resistance	ASTM D-2248, 72 hrs immersion in 3% solution at 100°F	Excellent, no effect
Resistance to Acid Pollutants	ASTM D 1308-87 Proc. 3.1.1 24 hr exposure 10% HNO <sup>3</sup> vapors	Excellent, no effect
Weathering - Color Retention	ASTM D-2244-89, 20 yrs, 45° South Florida	Maximum 5 NBS units color change
Weathering - Chalk Resistance	ASTM D-4214, 20 yrs, 45° South Florida	Rating of 8 minimum
Erosion	20 yrs, 45° South Florida	Maximum 15% loss

Notes:

1. ASTM - American Society for Testing Materials
2. NCCA - National Coil Coaters Association
3. Galvalume® is 55% Aluminum-Zinc alloy coated sheet steel and is a registered trademark of BIEC International, Inc.

**BMC SAN ANTONIO  
CORPORATE HQ**  
6515 Fratt Rd  
San Antonio, TX 78218  
210-650-3050  
800-669-0009  
Fax 210-650-0379

**BMC SEGUIN  
MANUFACTURING**  
2201 Rudeloff Rd  
Seguin, TX 78155  
830-401-5200  
Fax 830-303-0530

**BMC HOUSTON  
BRANCH FACILITY**  
1720 Maury St  
Houston, TX 77026  
713-223-4971  
Fax 713-236-9422

**BMC DALLAS  
BRANCH FACILITY**  
1940 W Northwest Hwy  
Dallas, TX 75220  
972-506-8496  
Fax 972-506-8478

**BMC DENVER  
BRANCH FACILITY**  
7505 E 41st Ave  
Denver, CO 80216  
303-322-3703  
Fax 303-322-3810

**BMC CHICAGO  
BRANCH FACILITY**  
1175 Carolina Dr  
W Chicago, IL 60185  
630-231-7495  
Fax 630-231-7520

**BMC ATLANTA  
BRANCH FACILITY**  
319 Lee Ind'l Blvd  
Austell, GA 30168  
770-941-5141  
Fax 770-941-7344

**BERRIDGE CALIFORNIA  
SALES CORPORATION\***  
18732 Corby Ave  
Artesia, CA 90701  
562-402-2081  
Fax: 562-865-7878



**BERRIDGE MANUFACTURING COMPANY**  
[www.berridge.com](http://www.berridge.com)

*Roofs of Distinction*