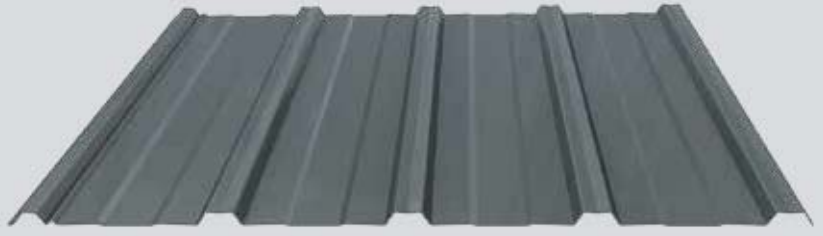


PANEL SPECS

- Minimum pitch recommended 2½:12
- 36" coverage with 5/8" rib height
- UL 790 Class A Fire Resistance Rating
- UL 2218 Class 4 Hail Impact Resistance
- High performance Enduracote paint system features an Energy Star® approved standard color offering
- Custom cut to lengths up to 40'

SUBSTRATES

- 29 gauge full hard galvanized steel
- G60 galvanized



StrongClad's high strength 29 gauge galvanized steel makes it perfect for post frame, agricultural and residential applications. A wide variety of colors plus excellent fire and hail impact resistance, makes StrongClad a beautiful yet durable choice for your roofing and siding needs.



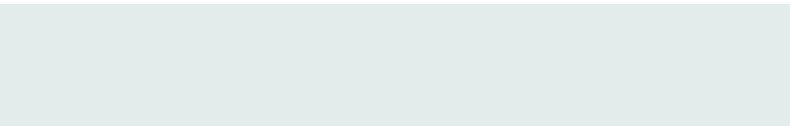
Roof Color: Brick Red; Wall Colors: Brite White and Charcoal Gray

To order, contact your local Fabral facility:
17904 E. 3100 North Road
Gridley, IL 61744
(800) 451-3974

600 15th Avenue N.E.
St. Joseph, MN 56374
(800) 873-3440

1820 East 26th Street
Marshfield, WI 54449
(800) 528-0878

StrongClad colors backed by a multi-year warranty



BRITE WHITE 824 IR=.60



WHITE 899 IR=.54



IVORY 883 IR=.62



LIGHT STONE 887 IR=.51



TAN 855 IR=.38



HICKORY MOSS 870 IR=.36



ANTIQUÉ BRONZE 854 IR=.29



COCOA BROWN 856 IR=.35



LIGHT GRAY 889 IR=.31



CHARCOAL GRAY 851 IR=.35



BRICK RED 898 IR=.31



CLASSIC BURGUNDY 853 IR=.26



EVERGREEN 875 IR=.27



CARIBBEAN BLUE 881 IR=.27



TRUE BLACK 882 IR=.30

Colors are as actual as allowed by the printing process. Actual metal samples are available; request samples prior to installation.

Note: colors vary depending on position and angles.



ENDURACOTE® PAINT SYSTEM

Enduracote® is a paint system that takes performance to the next level. Based on cutting edge resin technology, this system offers unbeatable durability and superior long-term performance against the elements. Enduracote is the choice for low maintenance, lasting beauty and outstanding value. Whether your application is new or old, commercial, agricultural or residential, Fabral's panels and paint systems are designed to exceed your requirements and expectations.

